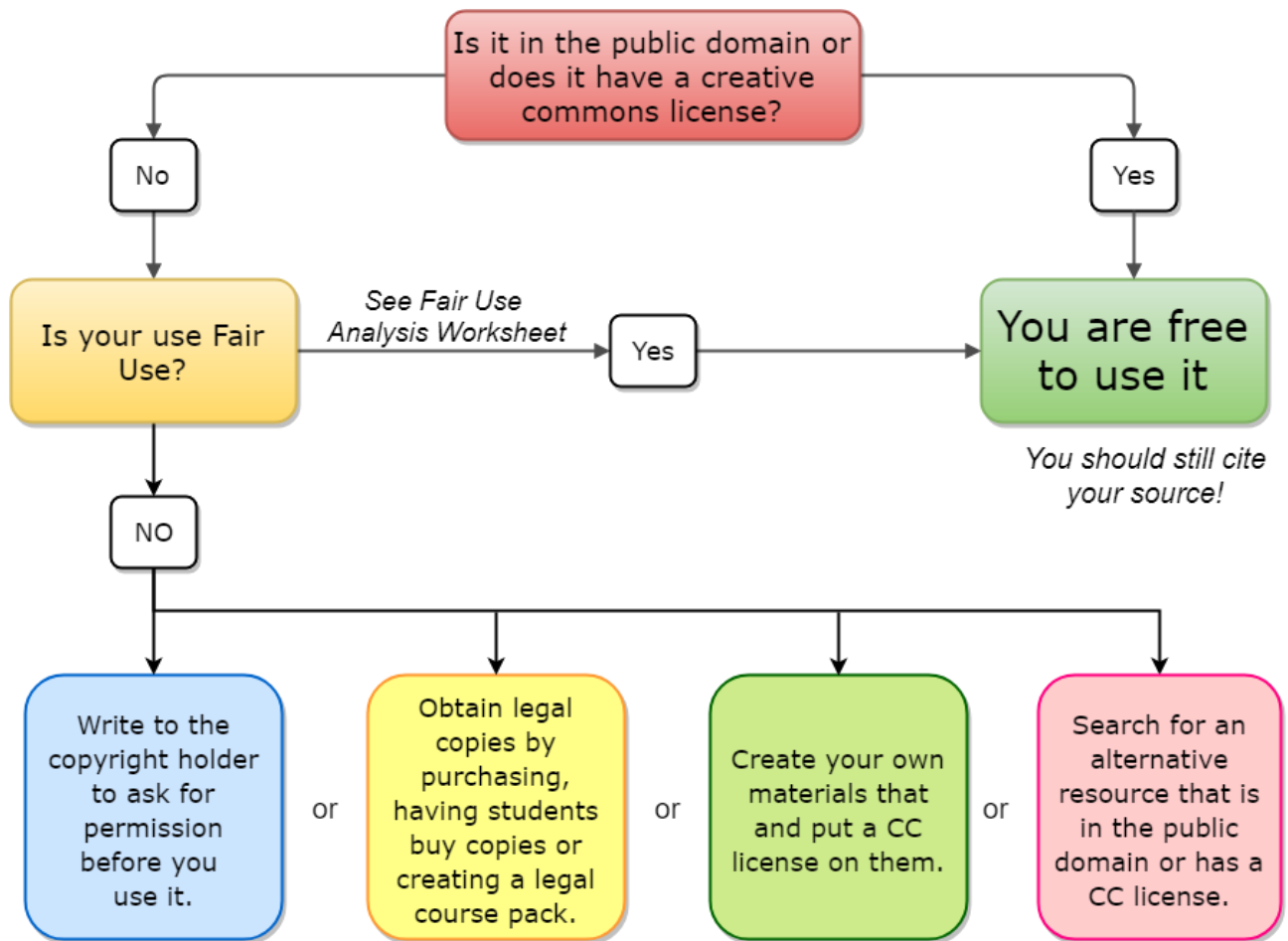


Am I allowed to use this?



Created using www.Draw.io

How do I ask for permission?

1. Figure out who to contact
2. Draft and send an email that contains:
 - How many students and copies. Include how often and how long you plan to use the resource.
 - The proposed format and access (print or electronic, posted online, restricted access)
 - Any modifications you want to make

How do I create a course pack?

- Select the resources you want to use – ensure you have complete citations for each resource
- If all of your resources are from a single publisher, contact the publishing company for a quote.
- If you have a variety of resources, contact the Copyright Clearance Center (<http://www.copyright.com>)

How do I put a CC license on my own work?

https://wiki.creativecommons.org/wiki/Marking_your_work_with_a_CC_license

How do I find alternative resources? <http://library.overlake.org/NCCE2018>

Digital versions available at <http://library.overlake.org/NCCE2018>



"Am I allowed to Use This?" by Mollie Page is licensed under a [Creative Commons Attribution-NonCommercial 4.0 International License](https://creativecommons.org/licenses/by-nc/4.0/). You may copy, reuse, distribute and modify for non-commercial uses as long as you attribute the work and include a copy of this license.